

# Underwood Conservation District

*Enhancing natural resources and stewardship in Skamania County and western Klickitat County*



*Welcome to UCD's Winter Workshop #1:*

## **Tree of Heaven – What, Why and How to Take Action**

with presentations by:

Josh Milnes, Washington State Dept. of Agriculture

Corrie Podolak, Underwood Conservation District

Emily Stevenson, Skamania County Noxious Weed Control

Phoebe Jud, WSU Extension and Forest Youth Success

# Visit

[www.ucdwa.org](http://www.ucdwa.org) to:

- ▶ Register for an upcoming workshop.
- ▶ View or listen to a workshop you missed (including past year's!)
- ▶ Sign up for our e-newsletter and stay up on current UCD events
- ▶ Learn about our programs and services
- ▶ Purchase native plants (on-line sale started up in November)

## WINTER WORKSHOP SERIES

DEC 2022 - FEB 2023

December



**Tree of Heaven - What, Why, and How to Take Action**  
Thursday, Dec 15, 2022, 6pm  
Online via Zoom

January



**UCD Year In Review - and Sneak Peek of our Future!**  
Thursday, Jan 12, 2023, 6pm  
Online via Zoom

February



**Wildfires in the Columbia Gorge –  
What We're Doing and What You Can Do**  
Friday, Feb 10, 6:30pm (doors open at 6pm)  
Mt. View Grange, White Salmon



Visit the UCD website for more information and to register. UCD's Winter Workshop events are free and open to all.

[www.ucdwa.org](http://www.ucdwa.org) | 509-493-1936

Underwood Conservation District



# For Tonight's Zoom...



Please remain **muted** throughout the presentation



Please **raise your hand** to speak and we will call on you.



Question? Audio/visual problems? Use the **Chat box**.



If you are having trouble with computer audio, you can also dial in using your **telephone**.

...Thank You!

*Sit back and relax...*

## Tonight's Program

6:00 pm – Welcome and quick overview of UCD programs

6:05 pm – Presentations and Guests

- Josh Milnes, WSDA – The of Threat of Tree of Heaven and Spotted Lanternfly and Statewide Efforts
- Corrie Podolak, UCD – Local Efforts to Control Tree of Heaven
- Emily Stevenson, Skamania County and Phoebe Jud, WSU Extension – Efforts to the West in the Control Tree of Heaven, Treatment and Monitoring Methods
- Marty Hudson, Klickitat County Noxious Weed Control

7:30 pm – Q&A for Presenters and Discussion

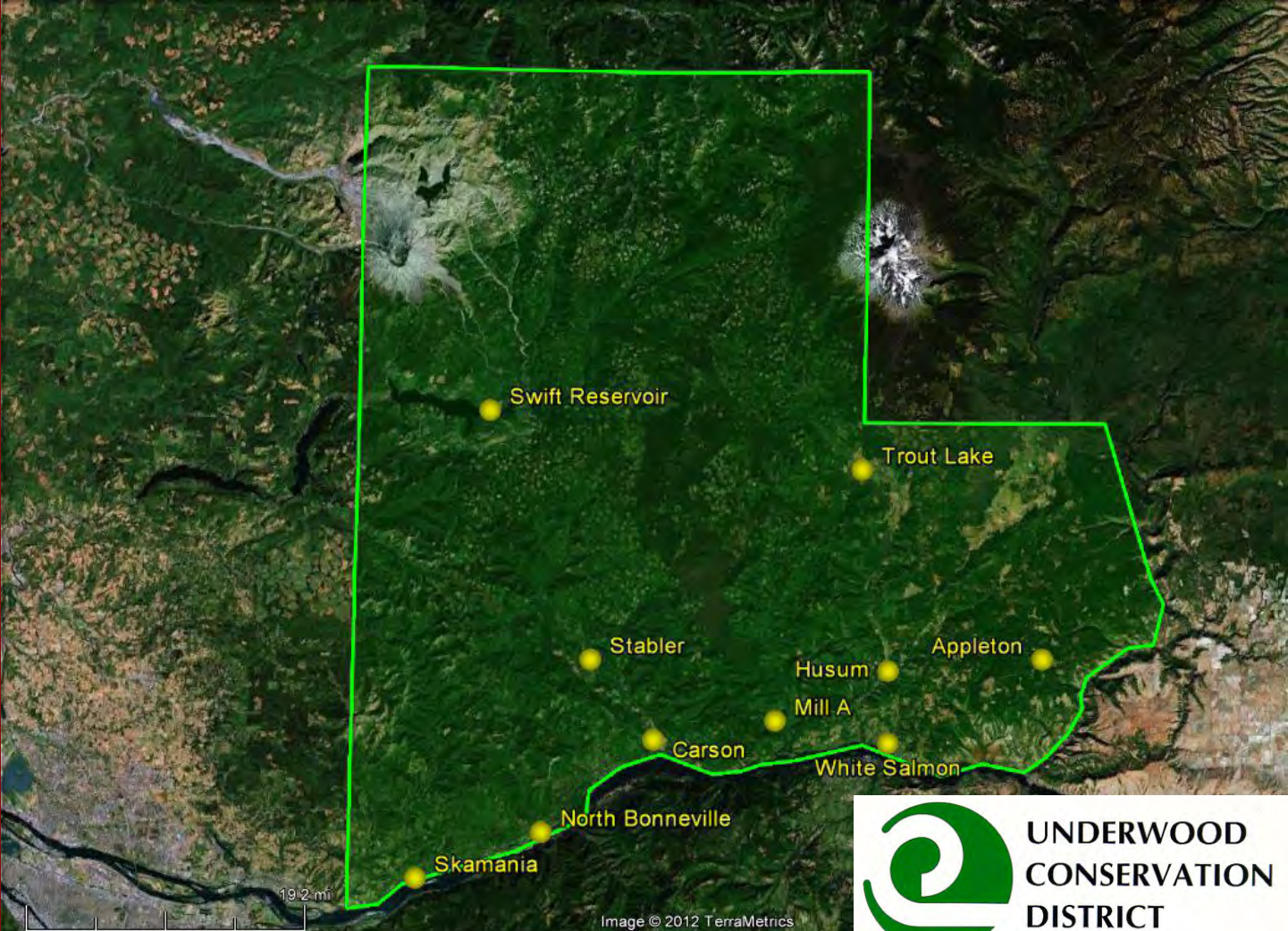


Image © 2012 TerraMetrics  
45°58'56.03" N 121°45'36.71" W elev 2929 ft



**UNDERWOOD  
CONSERVATION  
DISTRICT**



*Our Mission: to engage landowners and land users throughout Skamania and west Klickitat Counties in the voluntary conservation, enhancement, stewardship, and sustainable use of natural resources.*

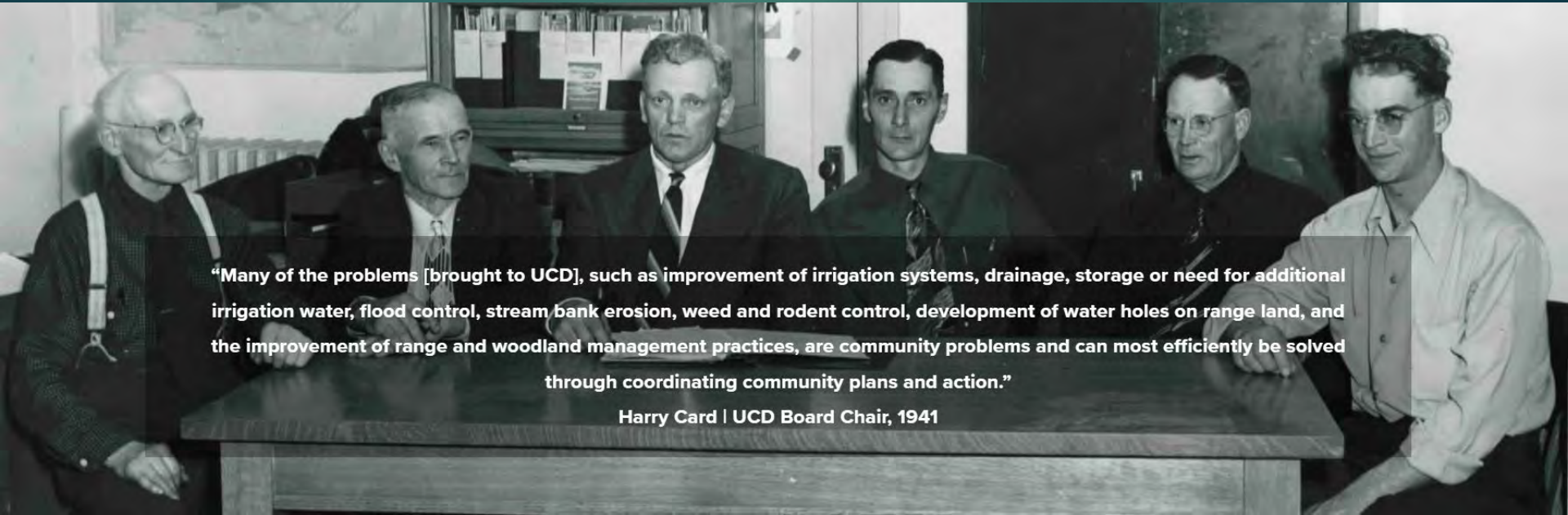
## District Programs

- ▶ Educational Workshops, Seminars and Field Trips
- ▶ On-Site Technical Assistance, Conservation Planning, Project Development and Cost-Share to:
  - Small Farms or Livestock Owners
  - Family Forests
  - Streamside landowners
- ▶ Native Plant Sale and Annual TreeFest
- ▶ Invasive Weed Management
- ▶ Integrated Beneficial Insect/Pollinator Habitat
- ▶ Fish Habitat Restoration
- ▶ Fish Passage Inventories and Correction
- ▶ Irrigation Fish Screen Installation
- ▶ Water Quality and Flow Monitoring
- ▶ Livestock Best Management Practices
- ▶ Oak Woodland and Forest Management
- ▶ Firewise and Wildfire Resilience
- ▶ Yard by Yard Habitat Conservation
- ▶ Tool Shed Library



# UCD Election

- ▶ Guided by 5-member board of volunteer supervisors. Three are elected, two are appointed.
- ▶ Board member, Kris Schaedel's position is up for election in 2023.
- ▶ Deadline to request a ballot through [www.ucdwa.org](http://www.ucdwa.org) is Jan. 31, 1pm. Ballots will be due Feb. 21, 4pm.



“Many of the problems [brought to UCD], such as improvement of irrigation systems, drainage, storage or need for additional irrigation water, flood control, stream bank erosion, weed and rodent control, development of water holes on range land, and the improvement of range and woodland management practices, are community problems and can most efficiently be solved through coordinating community plans and action.”

Harry Card | UCD Board Chair, 1941

# Tonight's Program

6:00 pm – Welcome and quick overview of UCD programs

6:05 pm – Presentations and Guests

- Josh Milnes, WSDA – The of Threat of Tree of Heaven and Spotted Lanternfly and Statewide Efforts
- Corrie Podolak, UCD – Local Efforts to Control Tree of Heaven
- Emily Stevenson, Skamania County and Phoebe Jud, WSU Extension – Efforts to the West in the Control Tree of Heaven, Treatment and Monitoring Methods
- Marty Hudson, Klickitat County Noxious Weed Control

7:30 pm – Q&A for Presenters and Discussion



# Spotted Lanternfly and Risk to Agriculture in Washington State

## Prevention, Detection, and Reporting

Joshua Milnes  
MS in Entomology

Underwood Conservation District webinar  
Klickitat, WA  
December 15, 2022



Washington  
State Department of  
Agriculture



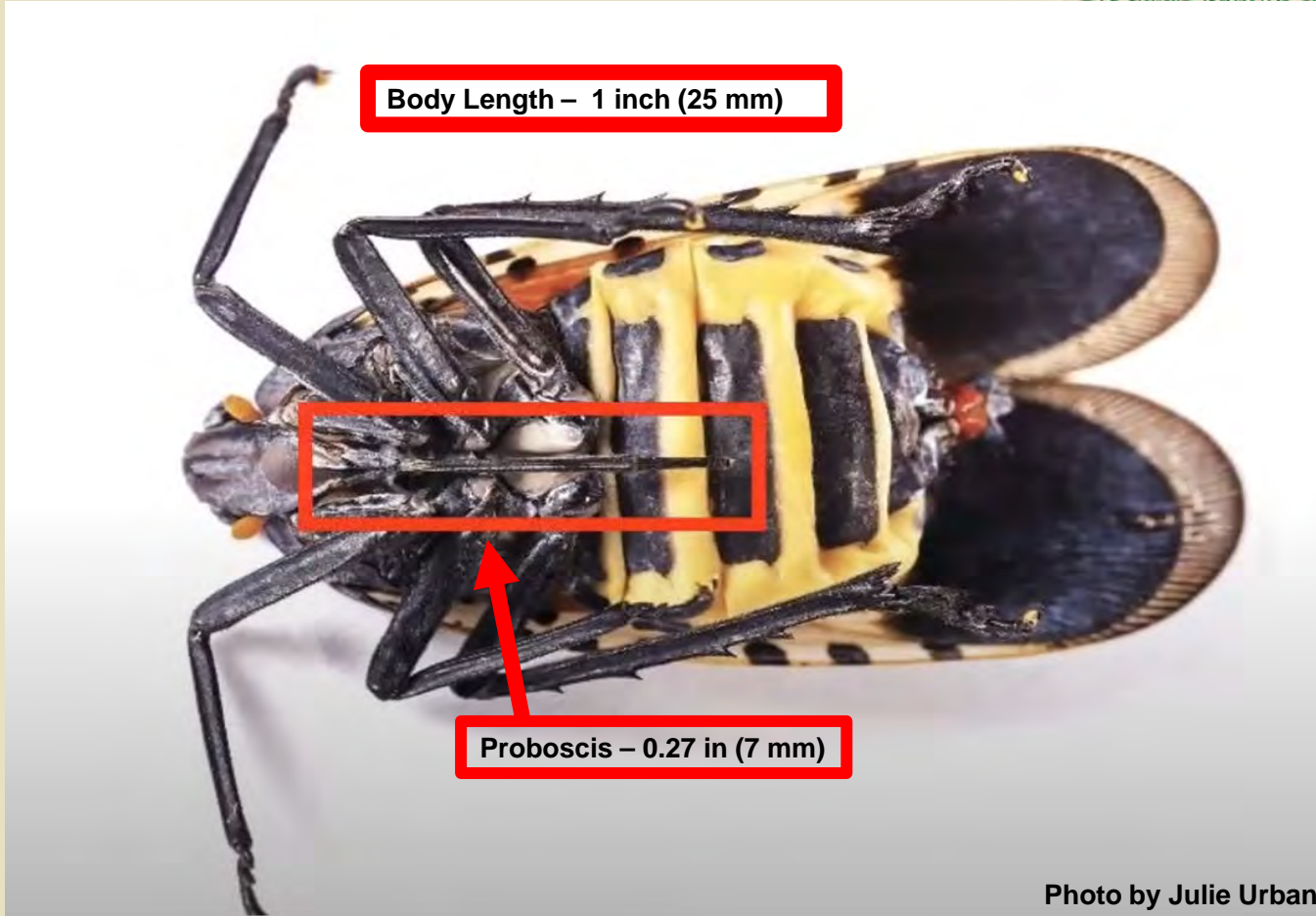
# Spotted Lanternfly

*Lycorma delicatula* (White, 1845):

- A Planthopper in the family Fulgoridae
- 696 Species of lanternflies in the world
- Only 17 species in North America
- Like most planthoppers, *Lycorma* pierce the stems of plants, trees, and vines and feed on phloem using their proboscis.



# Spotted Lanternfly



Body Length – 1 inch (25 mm)

Proboscis – 0.27 in (7 mm)

Photo by Julie Urban

# SLF Life Cycle



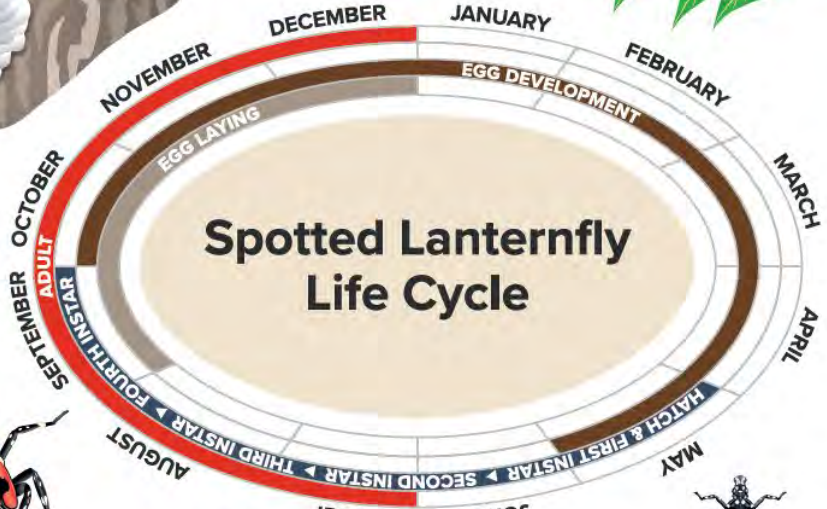
Adult  
1" (25 mm)



Egg Cases  
1.5" (33 mm)



Tree-of-Heaven is the preferred host plant for egg laying Aug.-Sept.



Egg case color can darken as the egg mass weathers



Uncovered



Partially Covered



Covered

EGG CASES



Mature Nymph  
7/8" (12 mm)



Young Nymphs  
Up to 3/8" (4 mm)



WASHINGTON STATE UNIVERSITY  
EXTENSION

**The spotted lanternfly is native to Asia and is found in China, Bangladesh, Vietnam**

**It was introduced to Japan, South Korea, and North America (14 eastern states).**



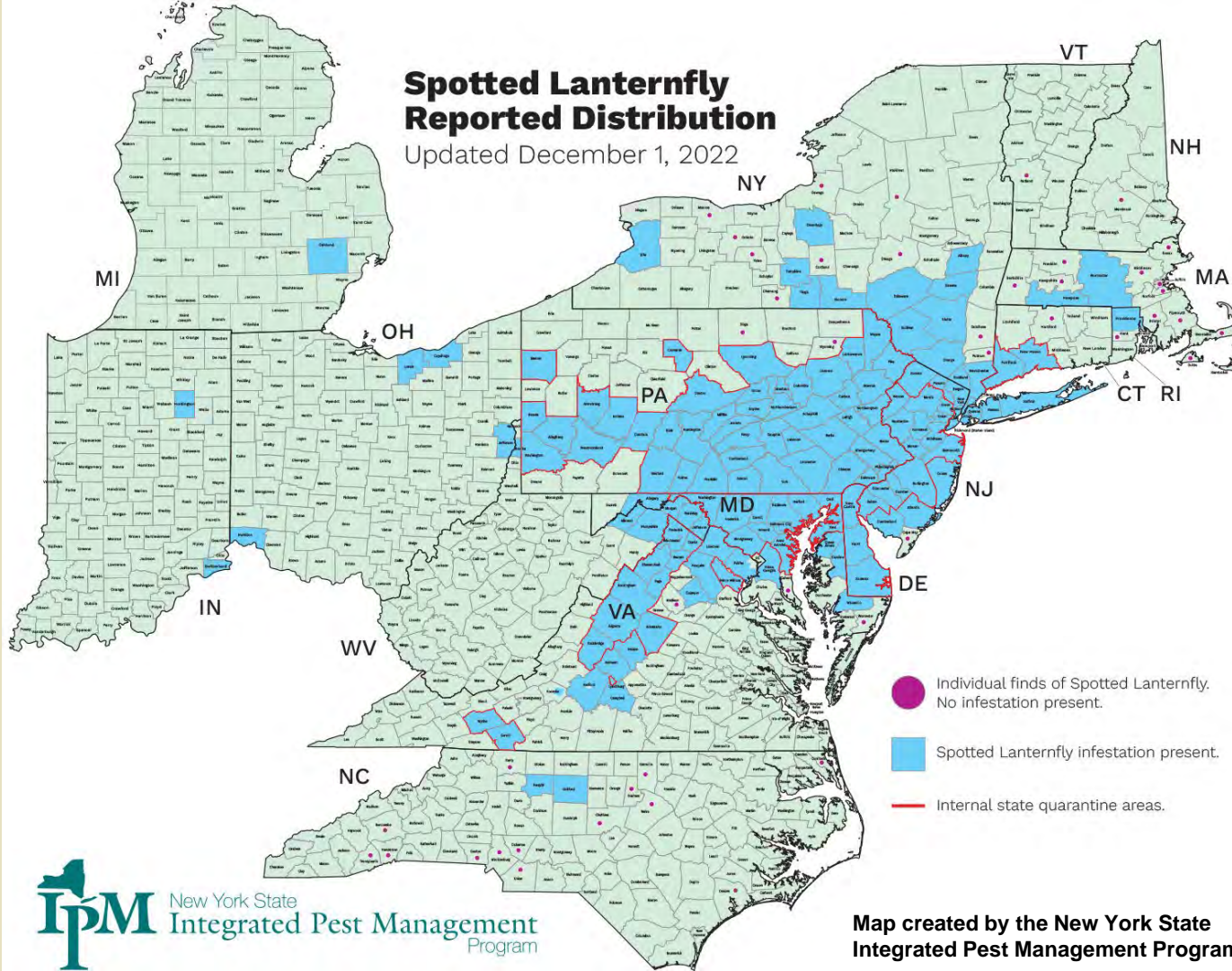
**In South Korea, it is considered an invasive pest and impacts grapes and peaches**



Follow FLOW:



# Current Distribution

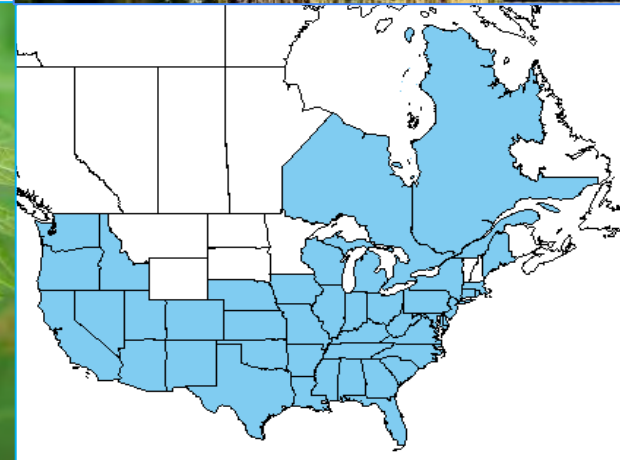
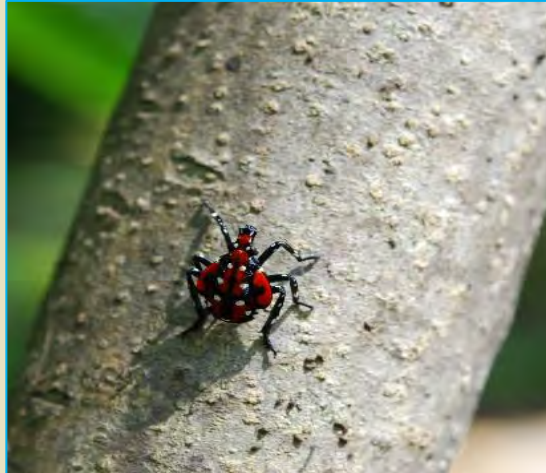


# Spotted Lanternfly makes use of over 172 different plant species

**According to USDA APHIS, the following crops are at risk from spotted lanternfly**

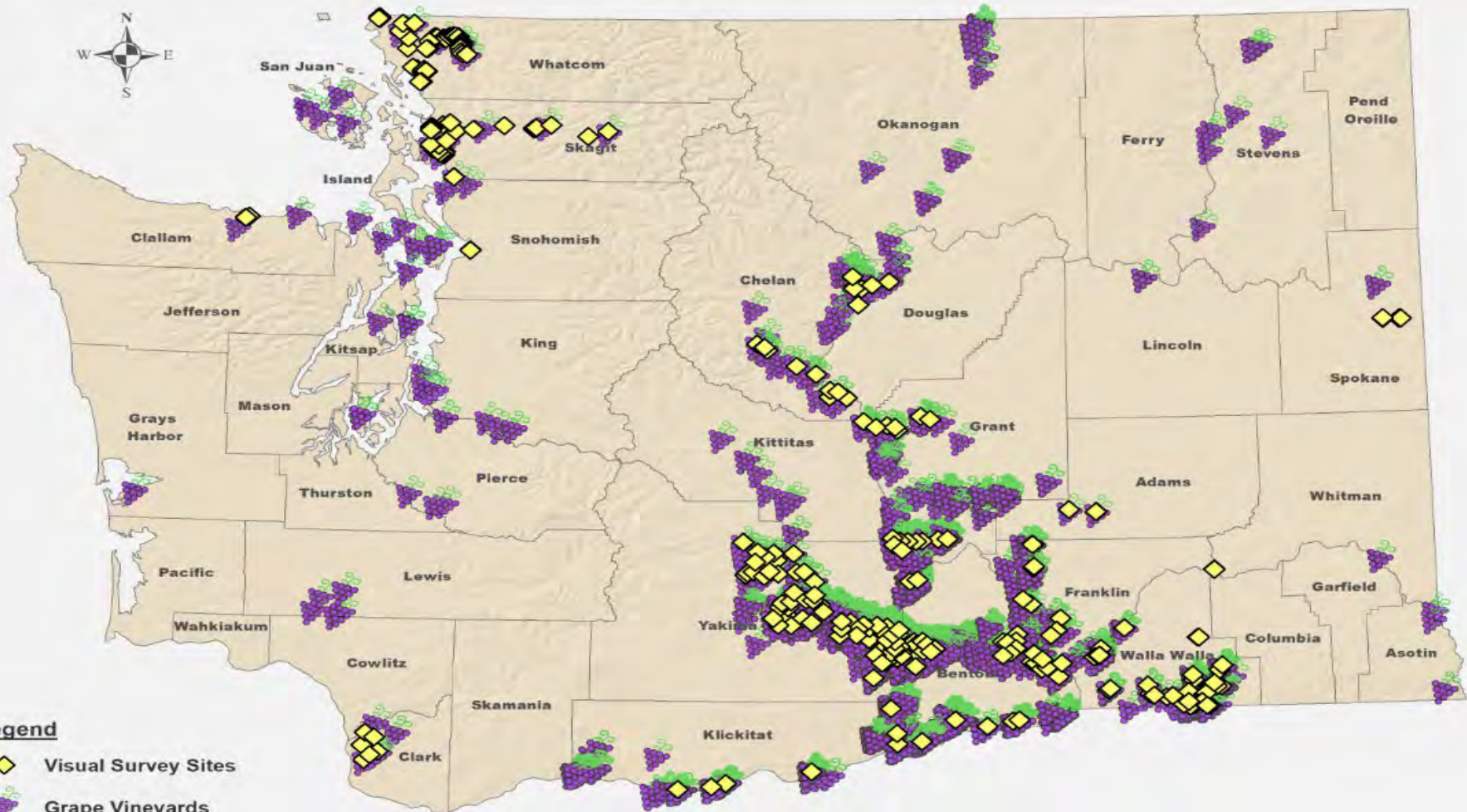
Almonds	Grapes	Peaches	Sycamore
Apples	Hops	Pine trees	Walnut trees
Apricots	Maple trees	Plums	Willow trees
Cherries	Nectarines	Poplar trees	Oak trees

Many of these are major crops in Washington State.





Tree of Heaven Distribution-USDA PLANTS Database

# WSDA Spotted Lanternfly Visual Survey Sites, 2019

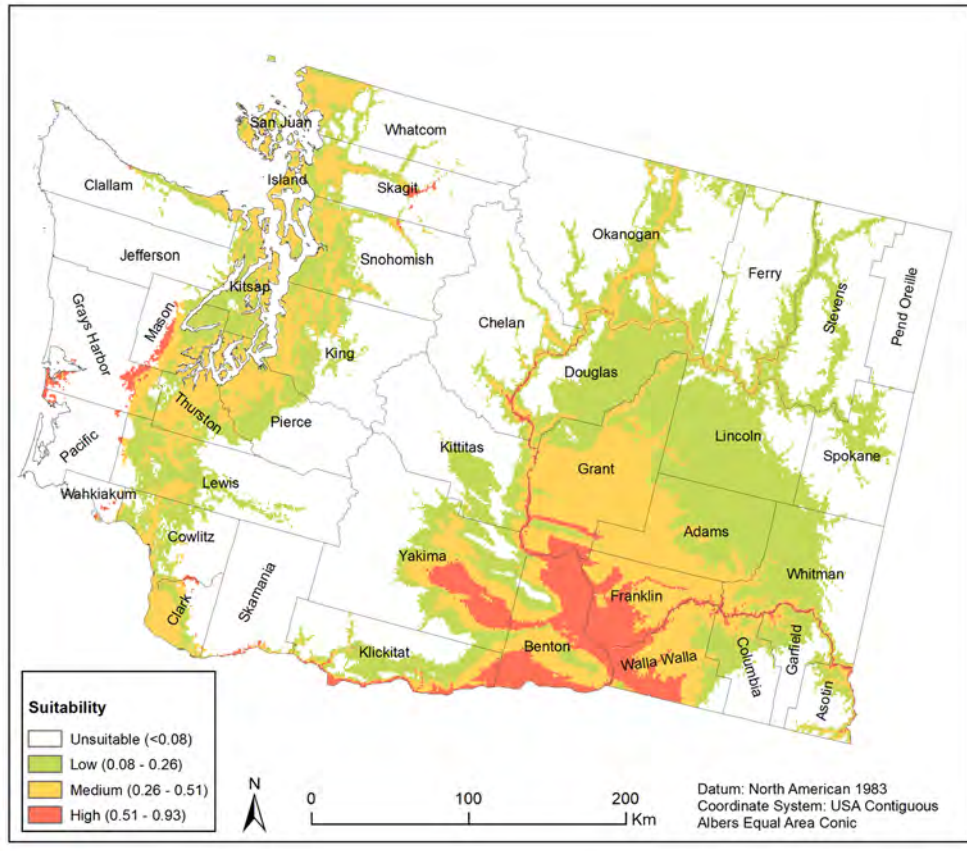


### Legend

-  Visual Survey Sites
-  Grape Vineyards



# Washington State is Susceptible to SLF



**Table 2.** The 2018 production values (US \$) of apples, hops, cherries, grapes, and pears in Washington, Oregon, and California in the western United States

Commodity	Washington	Oregon	California
Apples	2,185,875,000	55,180,000	71,000,000
Hops	427,502,000	69,855,000	-
Cherries	426,470,000	70,835,000	140,395,000
Grapes	360,910,000	-	6,254,211,000
Pears	210,630,000	140,966,000	77,344,000
Sub Total	\$3,611,387,000	\$336,836,000	\$6,542,950,000
Grand Total	\$10,491,173,000		

Source: National Agricultural Statistics Service (NASS 2018c in References Cited).

# Tree - of- Heaven, *Ailanthus altissima*

- Class: C (2012)
  - Not required for control in any county
- Listing reason: Fast spreading and growing, forming thickets.
  - Host for Spotted Lantern Fly
  - Allelopathic (creates compounds that are toxic to other plants.)
- Family: Simaroubaceae, quassia family
- Life cycle: Perennial
- Growth type: Tree/shrub
- Reproduction: Seed, root suckers, and stump sprouts



# Tree - of- Heaven General Description

- Foul smell, like rotten peanut butter
- Can grow up to 30 m tall
- Generally lives 30-50 years, occasionally 100
- Grows 1-2m a year
- Flowers April-July
- Seeds only viable for about a year
- Seeds easily spread on wind



# Leaf Identification

- Grow alternately on stems
- Compound leaves each “leaf” is actually many (10-45) leaflets
- Leaflets grow mostly opposite each other, with one on the tip, and are each 4-15cm long
- Leaflet base have 1-3 rounded teeth, with notable rounded glands on the underside
- Frequently red stems, midribs, and petioles



# Stem & Branch Identification

- Bark on older stems and trunk is smooth and gray.
- As it ages, it gains shallow, diamond-shaped fissures
- Young branches are yellow or yellow-brown to chestnut brown
- Lightly covered in very small light hairs
- Spongy pith center
- Branches have heart-shaped leaf scars, with a rounded bud at the cleft



# Look - a - like: Smooth sumac

- *Rhus Glabra*
- Native
- Grows up to 10ft tall
- Leaflets with serrated edges and no glands underneath
- bundles of flowers grow in dense, upright, spikes of flowers
- Fruits are small, dry, hairy, and start green before aging to red
- The stems are densely hairy, with no spongy pith center
- Milky sap



Photos from  
[LandscapePlants.Oregonstate.edu](http://LandscapePlants.Oregonstate.edu)

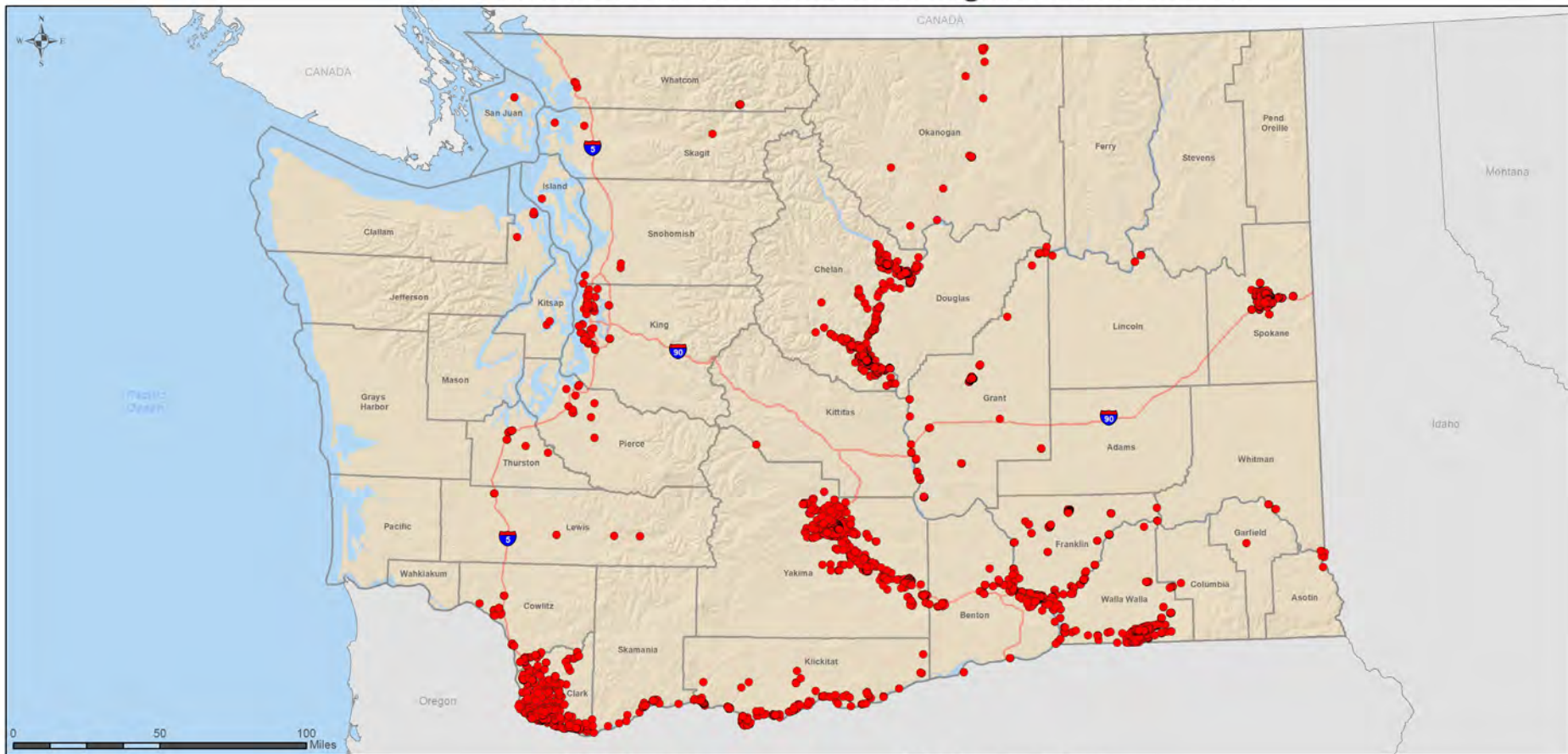


# Look - a - like: Black walnut

- *Juglans nigra*
- Non-native
- Can grow up to 50-75 ft tall
- Leaflets with serrated edges and no glands underneath
- Flowers are drooping, green catkins
- Fruit is a 1.5-2in round green husk around a walnut
- Trunk bark is coarse, with deep vertical ridges



# Recorded Tree-of-Heaven in Washington as of Fall 2022



## Legend

- Tree-of-Heaven Detections
- County Boundaries



Datum: North America 1983  
Coordinate System: StatePlane WA S. FIPS 4602 Ft.  
Projection: Lambert Conformal Conic  
Data Sources: County Noxious Weed Control Boards,  
Conservation Districts, iNaturalist, EDDMapS, WSDA Pest Program  
Creation Date: 11/28/2022



Scan this QR code  
to visit the WSDA Noxious  
Weeds web page

<https://agr.wa.gov/departments/insects-pests-and-weeds/weeds>

This Data is provided on an "AS IS," "AS AVAILABLE," and "WITH ALL FAULTS" Basis. The Content of this map and data are from many sources and are NOT warranted to be complete, accurate, or current. All critical information should be independently verified. WSDA and its officials and employees assume no responsibility or legal liability for the accuracy, completeness, reliability, timeliness, or usefulness of any of the information presented here.



# Spotted Lanternfly

Impact: Damage grape, hops, orchards, hardwood, and nursery industries.

Damage comes from feeding waste (honeydew) Which turns into sooty mold.



# Spotted Lanternfly

Egg masses have on average between 30-50 eggs and can be laid on trees or any smooth surface

Egg masses have been found on many different objects and are often well hidden



# Spotted Lanternfly

All life stages can hitchhike to new areas, but egg and adults pose the greatest risk for movement

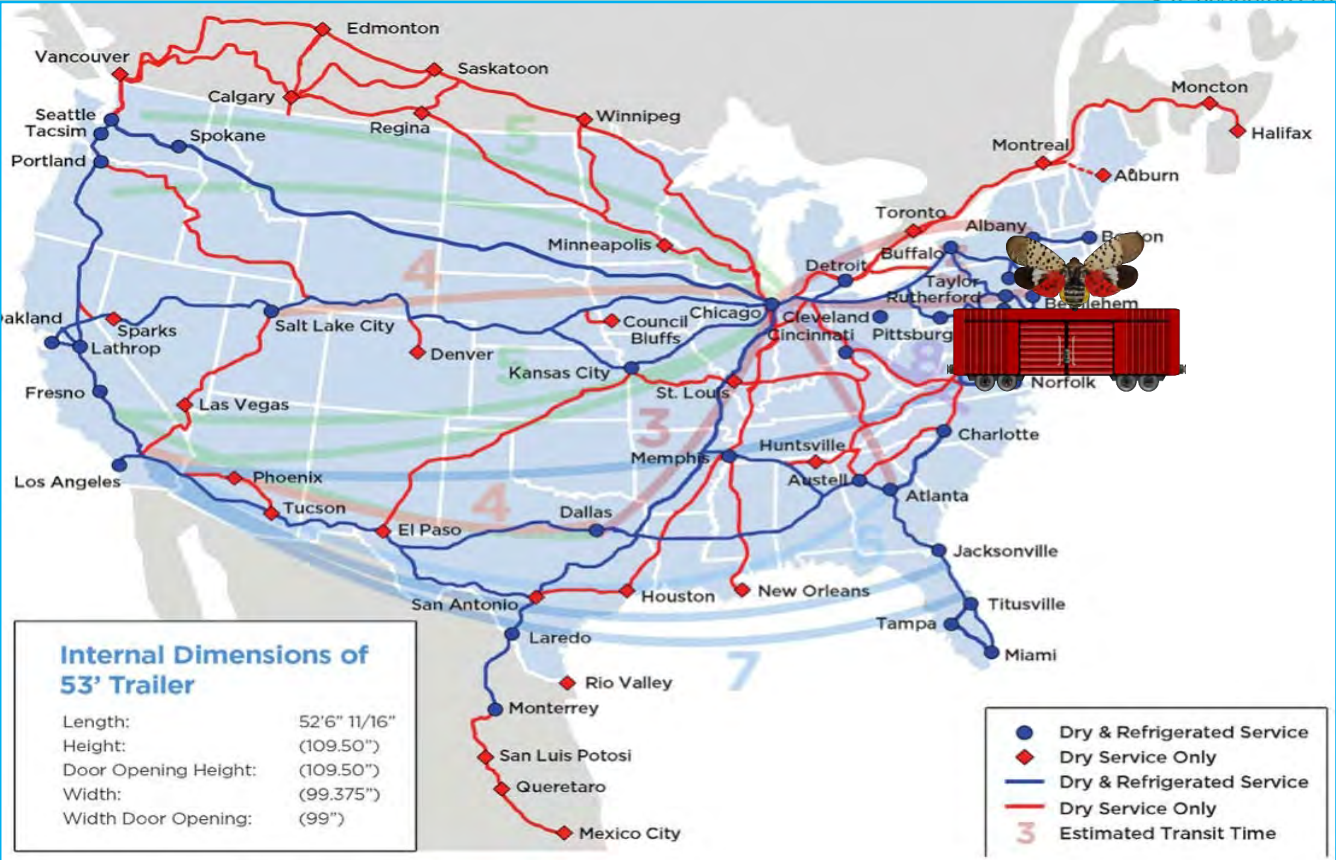
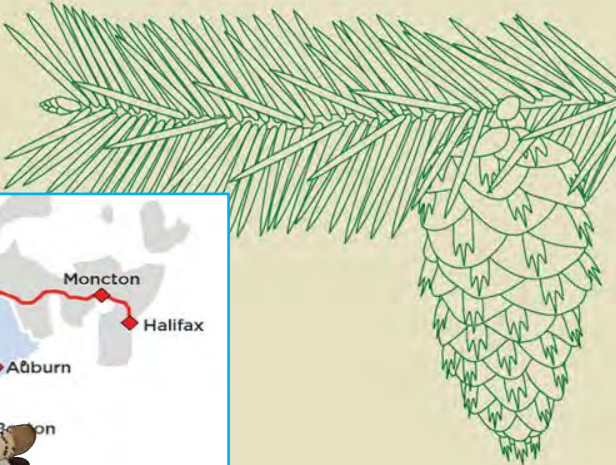


# Spotted Lanternfly



**Why should  
Washington  
care?**

# Spotted Lanternfly



Why should Washington care?

# Native predators of SLF in North America

*Apoecilus cynicus*  
(Hemiptera:  
Pentatomidae)



Photo by Barringer et al., 2016



<https://www.dominionpestcontrol.com/what-are-a-spotted-lanternflys-natural-enemies/>



Spiders

Praying Mantis



Photo by Scott Dunham



Photo by GH Photos / Alamy Stock Photo

Wheel bug *Arilus cristatus*  
(Hemiptera: Reduviidae)

# Spotted Lanternfly

Other IPM options:

Dr. Kim Hoelmer (USDA) and his associates are looking into possible biological control options

Much more needs to be learned before biological control can be implemented



Female



Male

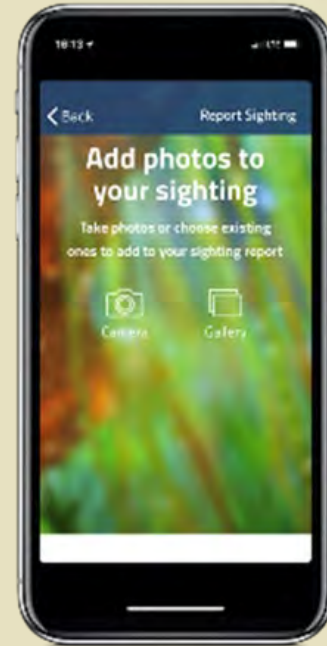
*Anastatus orientalis* Yang & Choi (Hymenoptera: Eupelmidae)



*Dryinus sinicus* Olmi (Hymenoptera: Dryinidae)

# How Can You Help?

1. Plant and Promote Non-Invasive Alternatives
1. **Survey Your Community for Tree-of-Heaven and Report Findings**
1. Control Tree-of-Heaven on Your Property and Advocate for Removal on Public Lands







# Thank you



Joshua Milnes  
Entomologist  
Washington State Department of Agriculture  
agr.wa.gov  
jmilnes@agr.wa.gov  
(509)220-1134

Justin Bush  
Executive coordinator  
Washington Invasive Species Council  
InvasiveSpecies.wa.gov  
justin.bush@rco.wa.gov  
(360) 704-0973



Washington  
State Department of  
Agriculture

Anne Schuster  
Education Specialist  
Washington State Noxious Weed Control Board  
nwcb.wa.gov  
aschuster@agr.wa.gov  
(360) 688-4094 (cell)  
(360) 725-5764 (office)



# Local Efforts to Control Tree of Heaven

What, Why and How to Take Action

Presented by: Corrie Podolak  
Underwood Conservation District



# Tree of Heaven, *Ailanthus altissima*

- ▶ Class C Noxious Weed – Not required for control in any county
- ▶ Reason for listing: Fast spreading and growing, forming thickets or monocultures.
  - Host for Spotted Lantern Fly
  - Allelopathic – secretes a chemical that is toxic to nearby plants.
- ▶ Life cycle: Perennial
- ▶ Reproduction: Seed, root suckers, and stump sprouts

(Photo credit: WA Invasive Species Council)



# Tree of Heaven

## General Description

- ▶ Can grow up to 80ft. tall
- ▶ On average lives 30-50 years, occasionally up to 100 years
- ▶ Can grow 10-15 feet in a year
- ▶ Flowers April-July
- ▶ Foul smell, like rotten peanut butter
- ▶ Seeds only viable for about a year and easily spread by wind
- ▶ Grows well in poor conditions, in cracks of sidewalks, foundations, etc.



# Leaf Identification

- ▶ Grow alternately on stems
- ▶ Leaf edges are smooth
- ▶ Compound leaves each “leaf” is actually many (10-45) leaflets
- ▶ Leaflets grow opposite each other, with one on the tip, and are each 4-15cm long
- ▶ Leaflet base has 1-3 rounded teeth, with rounded glands on the underside
- ▶ Frequently red stems and midribs



# Stem & Branch Identification

- ▶ Bark on young trunks are smooth and brownish-green. As bark ages, it has shallow, diamond-shaped fissures, resembling cantaloupe skin
- ▶ Young branches are yellow or yellow-brown to chestnut
- ▶ Lightly covered in very small hairs
- ▶ Branches have heart-shaped leaf scars, with a rounded bud at the cleft



# Flower & Seed ID

- Plants are dioecious, male and female.
- Inflorescences (the bundles of flowers) form a loose cone shape, are 4-12 in wide
- Individual flowers are light green to white, 6-8mm wide, have 5 petals and 5 sepals
- Single seeds form in the center of thin, lightly twisted paper-ey wings, which are 1-2in long and 0.25-0.75in wide
- Starts green-yellow and ages to red or brown



# Look a-like: Smooth & Staghorn Sumac

- *Rhus glabra*, *R. typhina*
- Smaller, 10-20 ft. tall
- Leaves are serrated with no glands underneath
- Will also spread through root suckers and create thickets
  - Smooth sumac is native and a better for riparian areas
  - Rough sumac “Lacinata” cultivar does not spread fast
- Bright green foliage turns dramatic colors in fall
- Light green-yellow flowering panicles turn crimson in fall and winter
- Like full sun, well drained soil, and need summer water until established



Photos from  
LandscapePlants.Oreg  
onstate.edu



# Look a-like: Black walnut

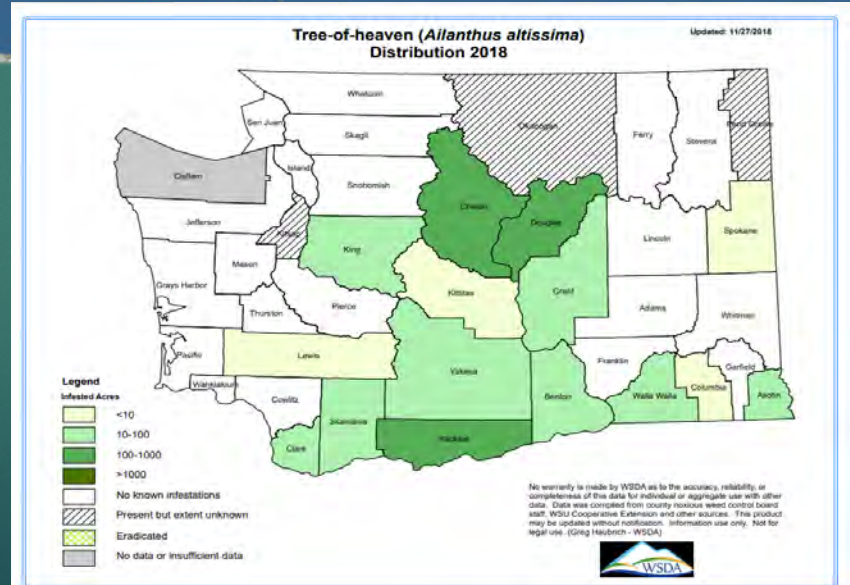
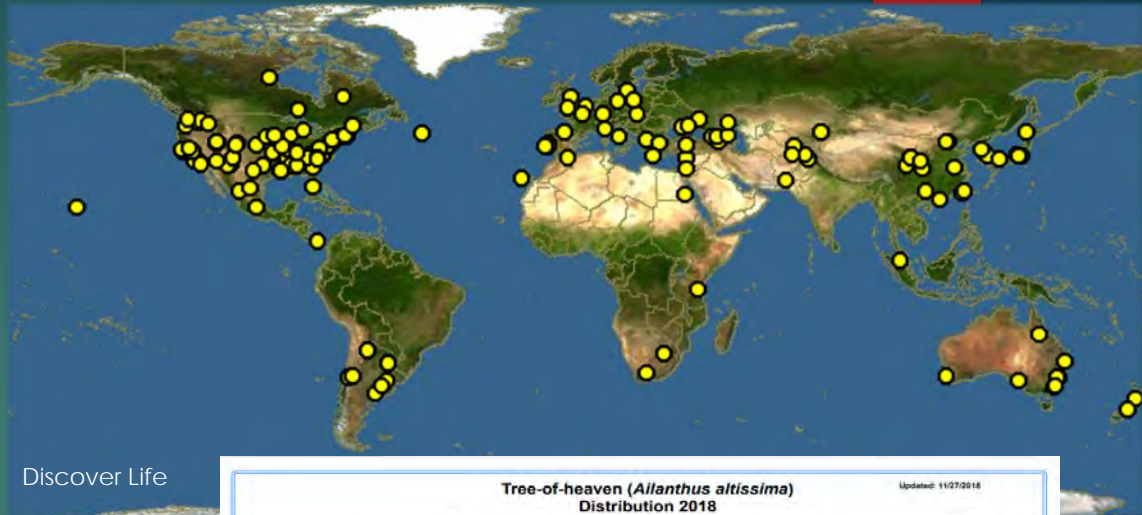
- *Juglans nigra*
- Non-native
- Can grow up to 50-75 ft tall
- Leaflets- serrated edges and no glands underneath
- Flowers- drooping, green catkins
- Fruit is a 1.5-2in round green husk around a walnut
- Bark is coarse, with deep vertical ridges



Photos from  
[LandscapePlants.Oregonstate.edu](https://landscapeplants.oregonstate.edu)

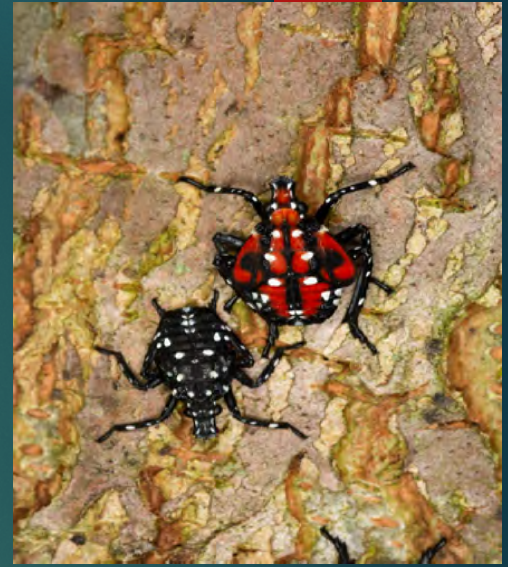
# Where TOH grows:

- **Habitat:** Variable. Sun to partial shade. Forest edges, roadsides, gardens, disturbed areas
- **Washington,** with high populations through the Columbia River Gorge
- **Surrounding states:** Idaho, Oregon, California, and Southern British Columbia
- **Native Range:** China. Introduced to WA in the 1800s.



# Spotted Lanternfly, *Lycorma delicatula*

- First found in the US in 2014
- A Planthopper in the family Fulgoridae
- Like most planthoppers, *Lycorma* pierce the stems of plants, trees, and vines and feed on phloem using their proboscis.



# UCD Tree of Heaven Outreach:

- City council meetings in White Salmon and Bingen.
- Website: (<https://www.ucdwa.org/tree-of-heaven-control-project>)
- Fliers and signage, producing news articles and social media posts
- Attending and setting up tables at community events
- Educating school children

## TREATMENT SITE FOR TREE OF HEAVEN

This site has been treated to kill the Tree of Heaven tree. Why? Tree of Heaven is the preferred host for the Spotted Lanternfly, a new and emerging pest in the United States, already widespread on the East coast and making its way to the Midwest. Tree of Heaven crowds out native vegetation and Spotted Lanternfly can become a huge problem for our agricultural industry, specifically fruit trees, grapes, ornamentals and hops. Underwood Conservation District and partners are working to help control the Tree of Heaven. For information about control methods, check this website: [www.ucdwa.org](http://www.ucdwa.org), call 509-493-1936 ext. 6, or email [toh@ucdwa.org](mailto:toh@ucdwa.org) and scan the QR code below.



Funding to support this project was provided by the State of Washington Department of Natural Resources Urban and Community Forestry Program and the Columbia Gorge Cooperative Weed Management Area.



# UCD Outreach video

Search “Underwood Conservation District” on YouTube:  
<https://youtu.be/gmZB2P29z8U>



# Progress made this summer/fall:

- In September and October 2022, with help from our partners, we treated ToH in White Salmon and Bingen, WA.
- **26 private landowner's** residences treated in White Salmon and Bingen, totaling approximately **1,180 trees**.
- Additionally: business parking lots, along the railroad and on public right of way in Bingen and White Salmon, **400 more trees were treated**.



# Tree of Heaven Treatment Results:

- Along with property owners we will be monitoring the treated areas in the spring of 2023 for regrowth. Many trees will need follow-up treatments.
- Many treatment sites were showing signs of weakening, brown leaves and wilted appearance.
- The trees that do die from the treatments can be removed.
- We will be helping people replant the ToH sites with native species.



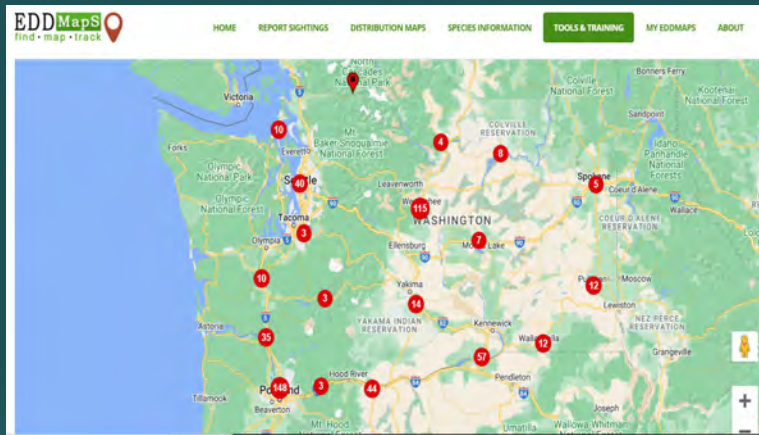
# How Can You Help?

1. Plant native species and promote non-invasive alternatives
2. Talk to your neighbors, survey your community for Tree of Heaven and report findings
3. Control Tree of Heaven on your property and advocate for removal on public lands



LandscapePlants.Oregonstate.edu





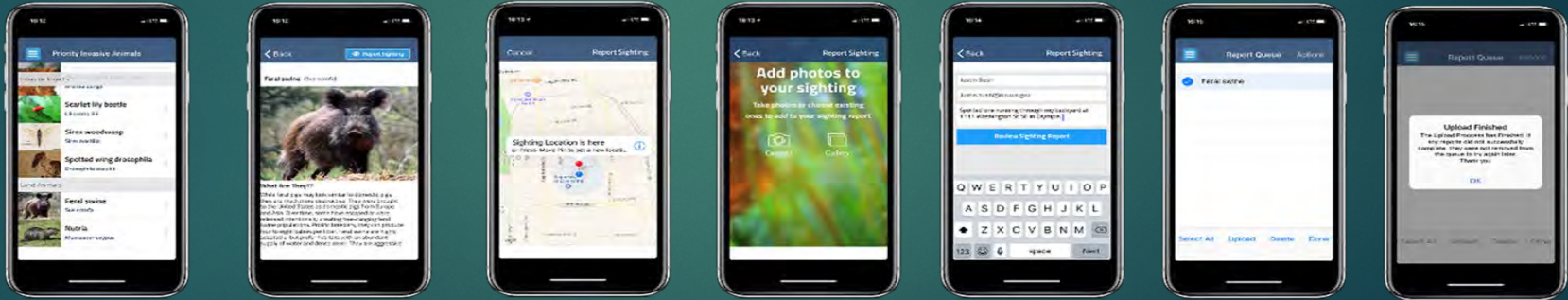
# Survey Your Community for Tree-of-Heaven and Report:

[EDDmaps.org](https://eddmaps.org)



# Ways to report: WA invasive Species Council [invasivespecies.wa.gov/report-a-sighting](http://invasivespecies.wa.gov/report-a-sighting)

- 1) Browse for ID information
- 2) Select species to report
- 3) Set location of sighting
- 4) Add photo
- 5) Write description/comments
- 6-7) Select Report & Submit!



# Spotted Lanternfly [and Tree of Heaven] Action Plan

\$100,000 U.S. Forest Service and  
\$100,000 Washington State Legislature

- Benton, Chelan, Clark, Franklin, Klickitat, Spokane and Yakima County Noxious Weed Control Boards
- Walla Walla County Conservation District

\$ 18,275 Washington Department of Natural Resources

\$5,000 Columbia Gorge Cooperative Weed Management Area

- Underwood Conservation District



# Mechanical & Manual Control

- Seedlings and small plants can be pulled or dug out only when the soil is moist
- Cutting and mowing alone will not be effective
- Can re-sprout from stems and stumps left in moist soil, as well as from root fragments
- Properly dispose of all removed plant materials
- Monitor up to 50ft away for root sucker sprouts for the next year



# Chemical Controls Used

- **Foliar spray:** When leaves are out, use of backpack sprayer is quickest. Watch out for nearby plants. Glyphosate, Triclopyr
- **Hack and squirt:** Minimizes sprouting and root suckers, done in summer or early fall. Periodic cuts around trunk. Any size tree. Glyphosate, Imazapyr
- *Always follow label instructions and all local laws and regulations when using herbicide and chemical control methods!*



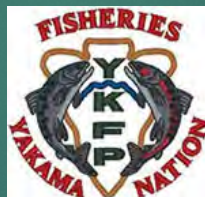
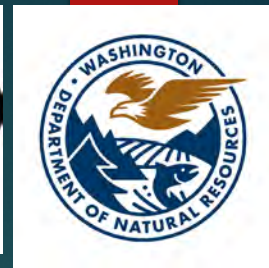
# Cultural & Biological Control

- Establishing a healthy stand of desired vegetation, which will shade out any seedlings, is the best method to prevention
- There are no biological control agents currently approved in Washington State
- Grazing can weaken roots, but causes continuous re-sprouting



# Optional Field Trip – TOMORROW

- Optional in-person field trip tomorrow: Friday, Dec. 16, meeting at 2pm
- Meet at White Salmon Bakery and see Tree of Heaven specimens at the White Salmon Bakery and the Harvest Market parking lot.
- Attendees will learn to identify it, discuss, see a treatment performed and visualize treatment results.
- Please RSVP to [corrie@ucdwa.org](mailto:corrie@ucdwa.org) if you plan to attend.



Thank you to our partners



# Contact UCD for more information:

- ▶ 509-493-1936 or [toh@ucdwa.org](mailto:toh@ucdwa.org)
- ▶ [www.ucdwa.org](http://www.ucdwa.org)
- ▶ <https://www.ucdwa.org/tree-of-heaven-control-project>
- ▶ 171 NW Washington Street, Park Center Building  
White Salmon, WA 98672

Consider attending Invasive Species and Exotic Pests Conference in Stevenson on Feb. 23, 2023!



# Forest Youth Success

Tree of Heaven Project - Skamania County



# Forest Youth Success

Summer work program for local teens that allow them to gain valuable work experience and life long skills while supporting the needs of USFS and other project partners



# Special Project

Partnership with SkaCo Noxious Weed Program

- Training- concerns, ID, outreach
- Neighborhood surveys
- Social Media Outreach
- Educational Display



# Special Project

Partnership with SkaCo Noxious Weed Program

- Training- concerns, ID, outreach
- Neighborhood surveys
- Social Media Outreach
- Educational Display

**324 properties surveyed**

**~215 acres**

**2,704 reached through FB (565)**



# Training



# Social Media Outreach



# Public Outreach





# Educational Display





# Skamania County Tree of Heaven Project

- Secured a grant from WSDA in 2021 for survey and pilot treatment program
- 2021 – started mapping and submitted first article in local newspaper
- Assisted 7 landowners with control using hack and squirt method
- Completed treatments in late October





## 2022

- Partnered with Skamania County's Forest Youth Success (FYS) for more extensive survey (funded by CWMA)
- Partnered with UCD on White Salmon/Bingen project
- Big education/outreach push

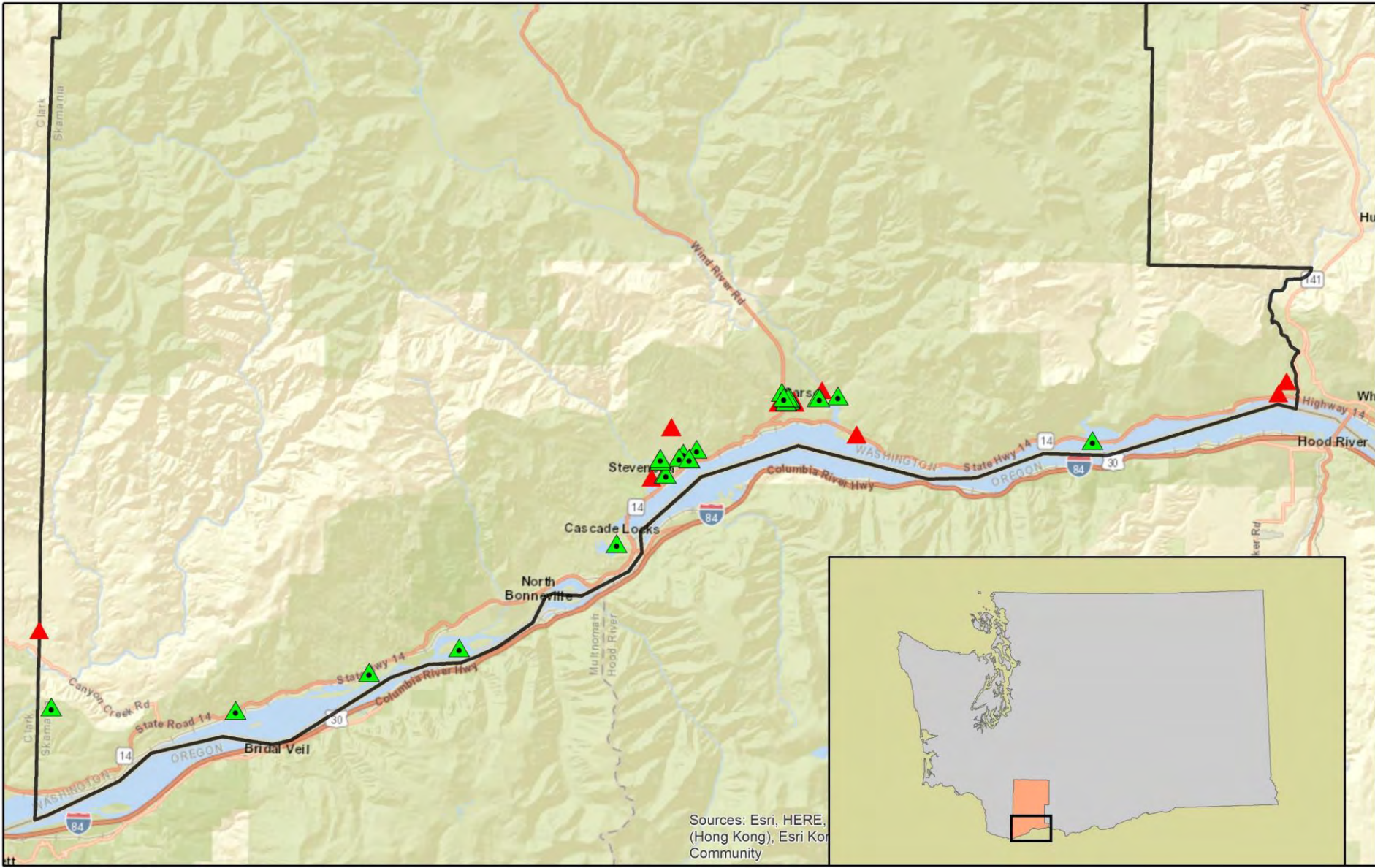




## 2022

- Over 400 properties surveyed
- 61 confirmed sites
- 54 landowners





**Skamania County  
Noxious Weed Control Program  
Tree of Heaven Eradication Project  
2021 - 2022**



- ▲ treated in 2021 & 2022
- ▲ needs treatment





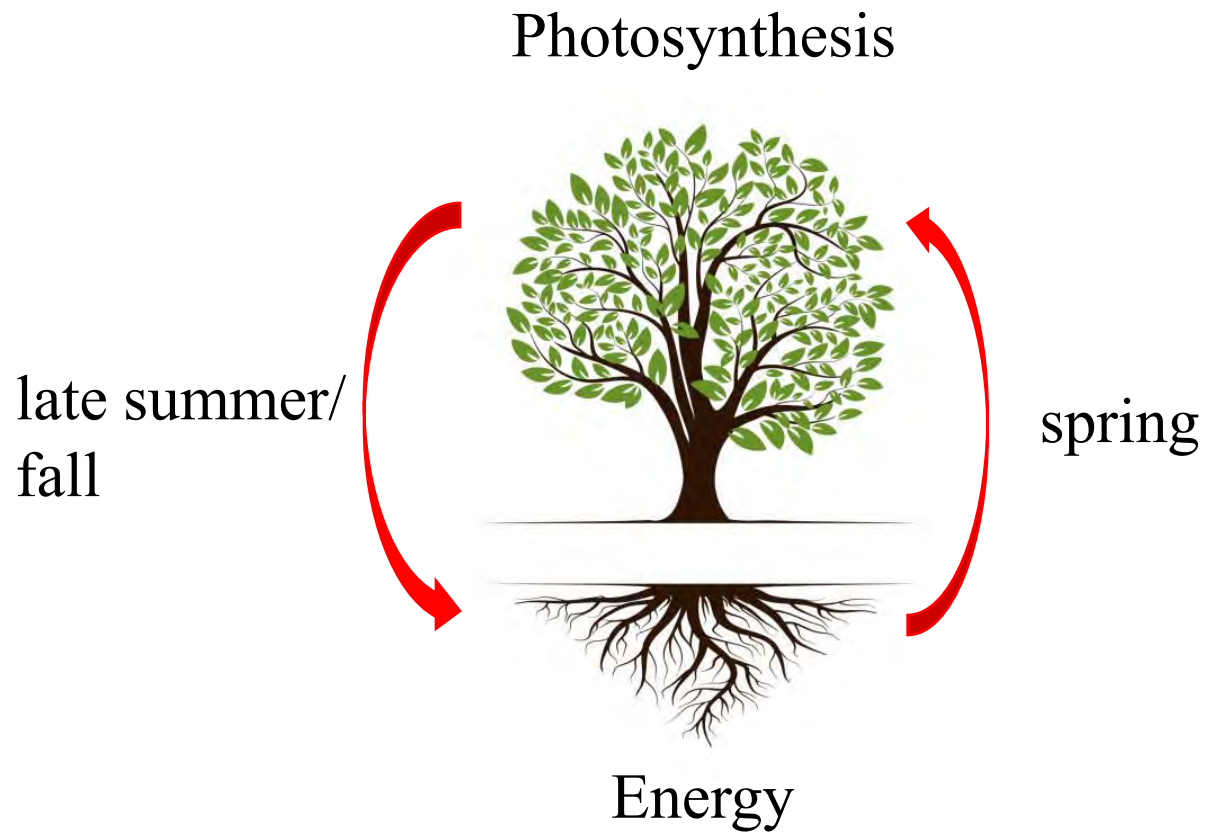
## Tree of heaven control

- 61 sites total
- 7 sites treated in 2021 (2 retreated in 2022)
- 26 new sites treated in 2022





# Tree of heaven control





# Tree of heaven control

- Multiple methods
- Timing is critical
- MUST use herbicide
- DO NOT CUT!



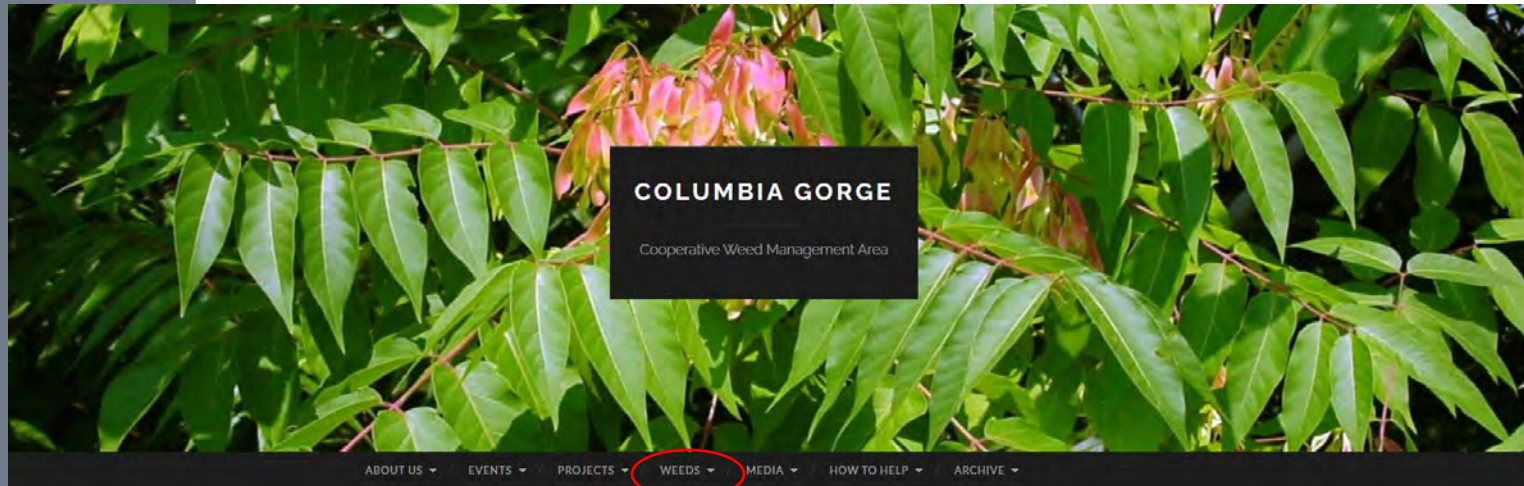




# Tree of heaven control

columbiagorgecwma.org

Weeds – Best Management Practices – tree of heaven



## Tree of Heaven

- [Printer-Friendly PDF](#)
- [Editable Word DOC](#)
- [May 2019 – Weed of the Month Poster](#)





# Tree of heaven control



## Foliar spray

- Shorter, younger trees
- 2% triclopyr or glyphosate (Crossbow or Roundup)





# Tree of heaven control



## Hack and squirt

- Space cuts around the circumference of the tree



- Leave uncut tissue (an inch between cuts) so the herbicide moves to the roots
- Apply undiluted triclopyr or glyphosate





# Tree of heaven control



## Injection with EZ-Ject lance

- Imazapyr cartridges inserted into cambium layer





# Tree of heaven control

## Cut and daub

- Fresh cut
- Apply 100% concentrate
- Utilize only on small trees if necessary









# Public Outreach

- Local newspaper
- FYS social media challenge – 2,731 reached with 565 engaging
- Presentations to BOCC and at luncheon
- TOH/SLF exhibit by FYS at Skamania Fair – blue ribbon and Judge’s choice award!





# Questions and Discussion

# Contact UCD for more information:

- ▶ 509-493-1936 or [toh@ucdwa.org](mailto:toh@ucdwa.org)
- ▶ [www.ucdwa.org](http://www.ucdwa.org)
- ▶ <https://www.ucdwa.org/tree-of-heaven-control-project>
- ▶ 171 NW Washington Street, Park Center Building  
White Salmon, WA 98672

Consider attending Invasive Species and Exotic Pests Conference in Stevenson on Feb. 23, 2023!  
...and final poll.

